



6 Asket Close, Leeds, LS14 1FA

A modern and extremely well presented, three bedroom house on a quiet cul de sac.

Built in 2018, this property contains a high-spec kitchen dining room, a large, bright living room and a downstairs WC. The first floor includes a large house bathroom and three double bedrooms, two of which have integrated wardrobes.

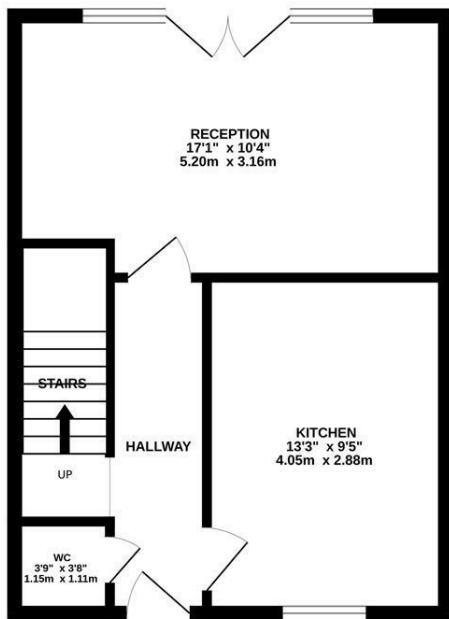
To the front of the house is a private driveway and front garden, with a large two-tier patio and lawn to the rear. There is also a shed and side access to the rear garden.

- Solar Panels
- Large Loft
- Integrated Wardrobes
- NHBC Warranty
- Off Street Parking
- Grade A EPC

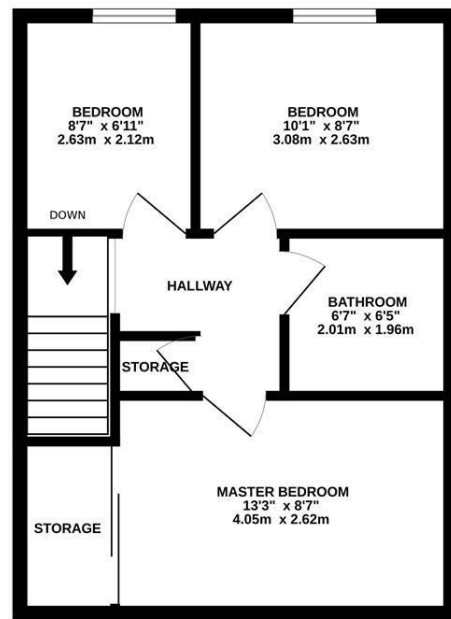
£249,950

www.fletcherprops.co.uk

GROUND FLOOR
403 sq.ft. (37.5 sq.m.) approx.



1ST FLOOR
403 sq.ft. (37.5 sq.m.) approx.



TOTAL FLOOR AREA : 807 sq.ft. (74.9 sq.m.) approx.

Whilst every attempt has been made to ensure the accuracy of the floorplan contained here, measurements of doors, windows, rooms and any other items are approximate and no responsibility is taken for any error, omission or mis-statement. This plan is for illustrative purposes only and should be used as such by any prospective purchaser. The services, systems and appliances shown have not been tested and no guarantee as to their operability or efficiency can be given.
Made with Metropix ©2024

Energy Efficiency Rating		Current	Potential
Very energy efficient - lower running costs			
(92 plus) A		93	94
(81-91) B			
(69-80) C			
(55-68) D			
(39-54) E			
(21-38) F			
(1-20) G			
Not energy efficient - higher running costs			
England & Wales		EU Directive 2002/91/EC	

Environmental Impact (CO ₂) Rating		Current	Potential
Very environmentally friendly - lower CO ₂ emissions			
(92 plus) A			
(81-91) B			
(69-80) C			
(55-68) D			
(39-54) E			
(21-38) F			
(1-20) G			
Not environmentally friendly - higher CO ₂ emissions			
England & Wales		EU Directive 2002/91/EC	

Tel: